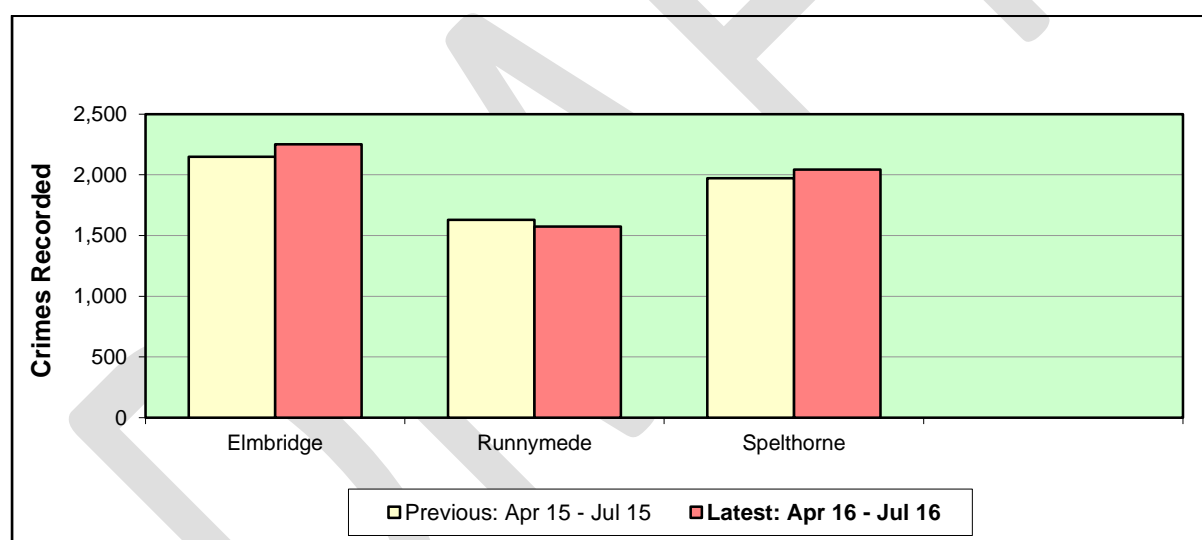


**Performance data:**

Introduction: The following tables consist of the Surrey Police data and Home Office iQuanta data.

The Surrey Police data illustrates performance around all reported crime from the start of the financial year 1<sup>st</sup> April 2016 to 31st July 2016. This gives a picture with regards to the current situation to the delivery of the community safety strategy's key crime priorities; the community safety strategy runs from April to March each year. It also provides for comparable performance with our closest Surrey local authority neighbours.

**Total notifiable offences**

Data to July 2016		Elmbridge	Runnymede	Spelthorne
Latest: Apr 16 - Jul 16		2,253	1,573	2,043
Previous: Apr 15 - Jul 15		2,150	1,629	1,972
% Change		+ 4.8%	- 3.4%	+ 3.6%

## **iQuanta Home Office Data**

The following iQuanta charts are provided by the Home Office database.

The first chart illustrates the volume of offences committed for the period 1.7.15 – 30.6.16 compared to the same period last year; this is supplemented with a percentage change in performance as a reduction or increase in reported offences.

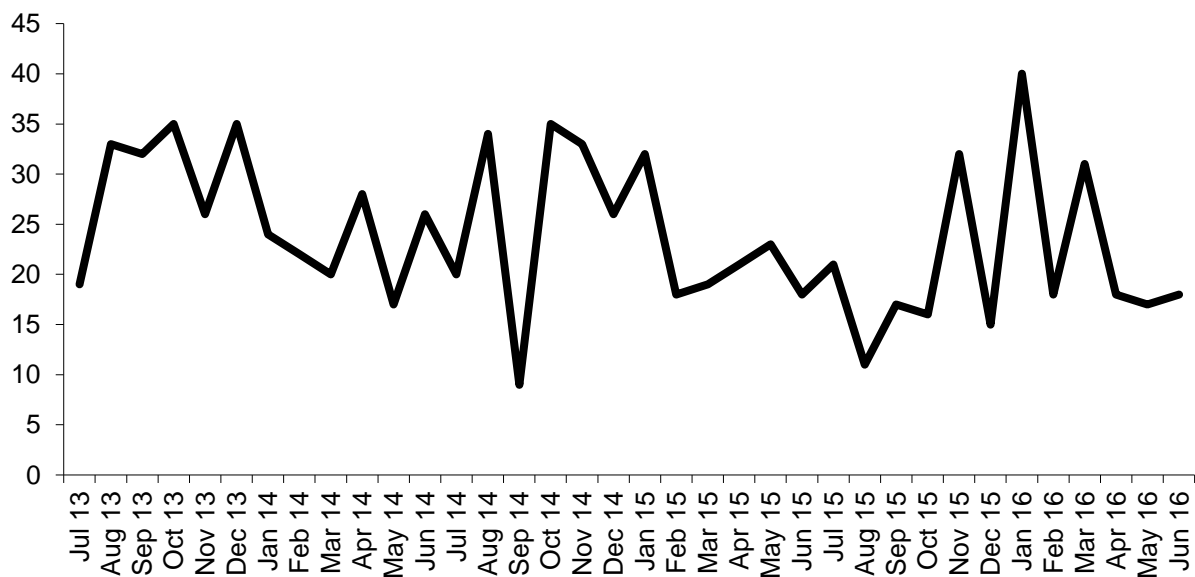
The second illustration shows a graph. The left hand side of the graphs provides details regarding the volume of offences; this is shown by numbers from 0 to 50. To show the actual number of offences for any period, the figure illustrated would need to be increased by 10; so for 18 in July 2013 it would read as 180 offences.

With regards to the bar chart in the third illustration, the figures on the left hand side refer to the number of victims per 1,000 population. So in the below chart which captures the figures for house burglary, Spelthorne has the equivalent of 6 victims per 1,000 population, this allows accurate comparisons of performance, no matter what size of the population within a local authority area. In the case of the bar chart the closer to the left position, the better the performance; 1<sup>st</sup> position is better than 15<sup>th</sup>.

**House Burglary**

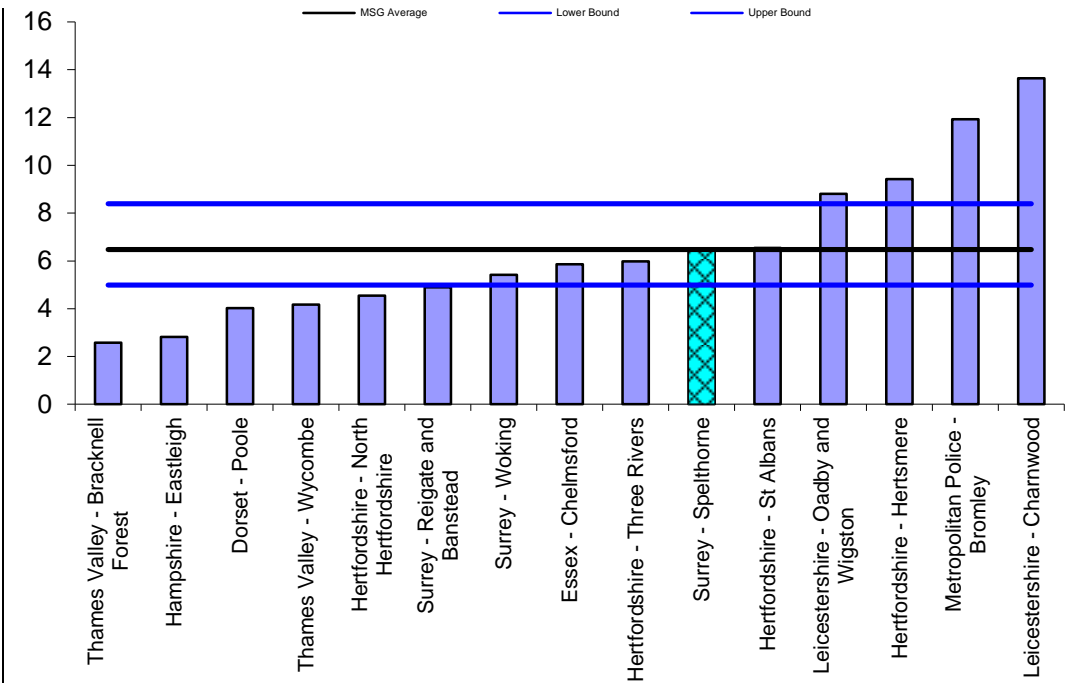
Prev Year Ending Selected Month		Year Ending Selected Month
<u>01 Jul 14 - 30 Jun 15</u>		<u>01 Jul 15</u> - -
288	<b>Down 34 (12%)</b>	<u>- 30 Jun</u> <u>16</u> 254

**iQuanta Volume Chart - Crimes  
Surrey - Spelthorne  
Burglary in a dwelling  
01 Jul 2013 - 30 Jun 2016**



**OFFICIAL SENSITIVE - Provisional data before it is finalised and published by the Office for National Statistics**

**iQuanta Bar Chart MSG (12 months) - Crimes per 1000 Households**  
**Surrey - Spelthorne**  
**Burglary in a dwelling**  
**01 Jul 2015 - 30 Jun 2016**



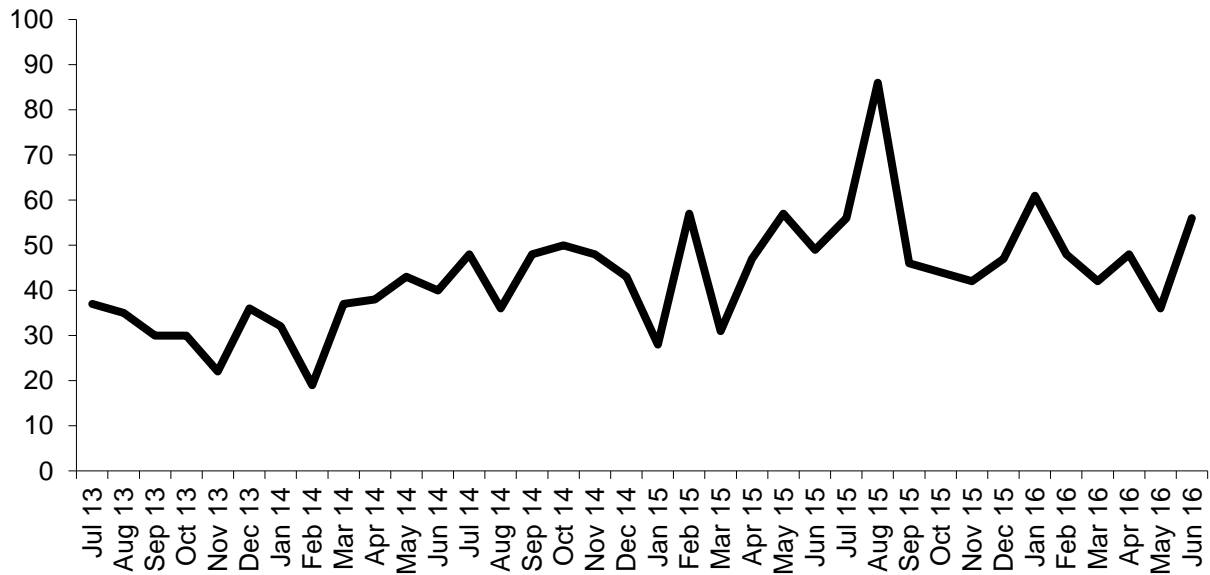
**OFFICIAL SENSITIVE - Provisional data before it is finalised and published by the Office for National Statistics**



**Violence with injury**

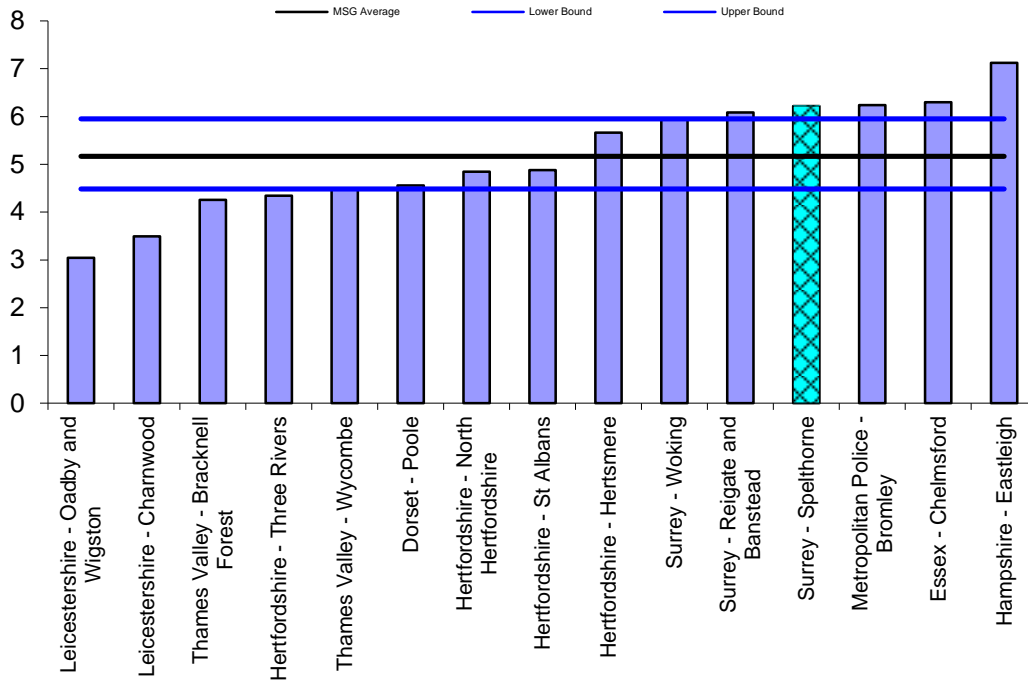
Prev Year Ending Selected Month		Year Ending Selected Month
01 Jul 14 - 30 Jun 15		01 Jul 15 - 30 Jun 16
542	<b>Up 70 (13%)</b>	612

**iQuanta Volume Chart - Crimes  
Surrey - Spelthorne  
Violence with injury (ONS)  
01 Jul 2013 - 30 Jun 2016**



**OFFICIAL SENSITIVE - Provisional data before it is finalised and published by the Office for National Statistics**

**iQuanta Bar Chart MSG (12 months) - Crimes per 1000 Residents  
Surrey - Spelthorne  
Violence with injury (ONS)  
01 Jul 2015 - 30 Jun 2016**

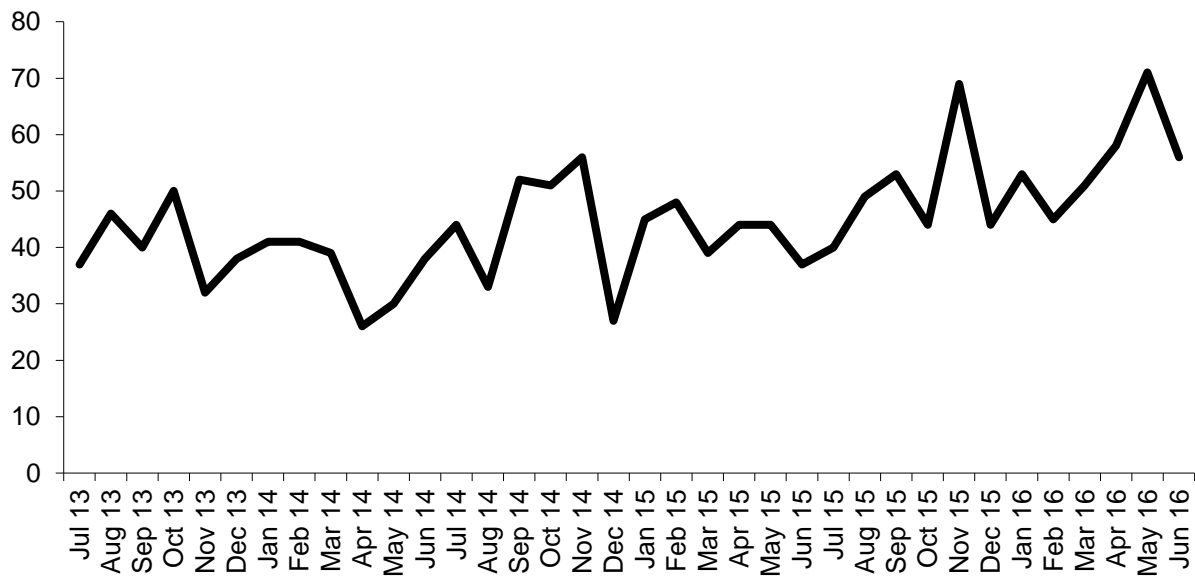


**OFFICIAL SENSITIVE - Provisional data before it is finalised and published by the Office for National Statistics**

Vehicle crime

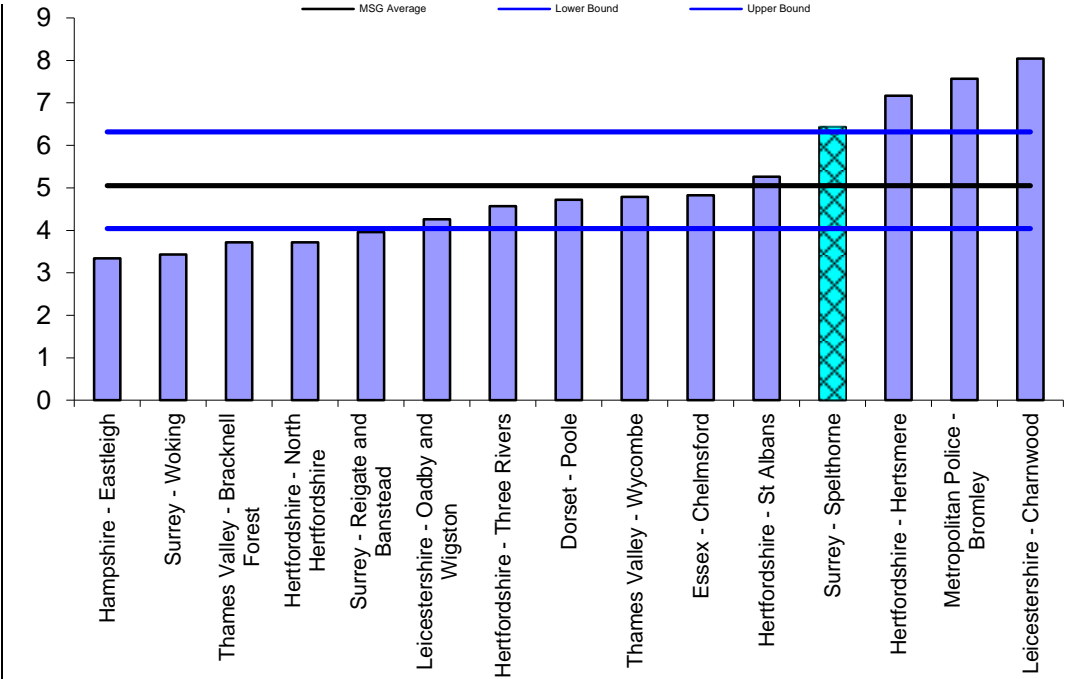
Prev Year Ending Selected Month		Year Ending Selected Month
<u>01 Jul 14 - 30 Jun 15</u>		<u>01 Jul 15</u> <u>- 30 Jun</u> <u>16</u>
520	<b>Up 113 (22%)</b>	633

**iQuanta Volume Chart - Crimes  
Surrey - Spelthorne  
Vehicle offences  
01 Jul 2013 - 30 Jun 2016**



**OFFICIAL SENSITIVE - Provisional data before it is finalised and published by the Office for National Statistics**

**iQuanta Bar Chart MSG (12 months) - Crimes per 1000 Residents**  
**Surrey - Spelthorne**  
**Vehicle offences**  
**01 Jul 2015 - 30 Jun 2016**



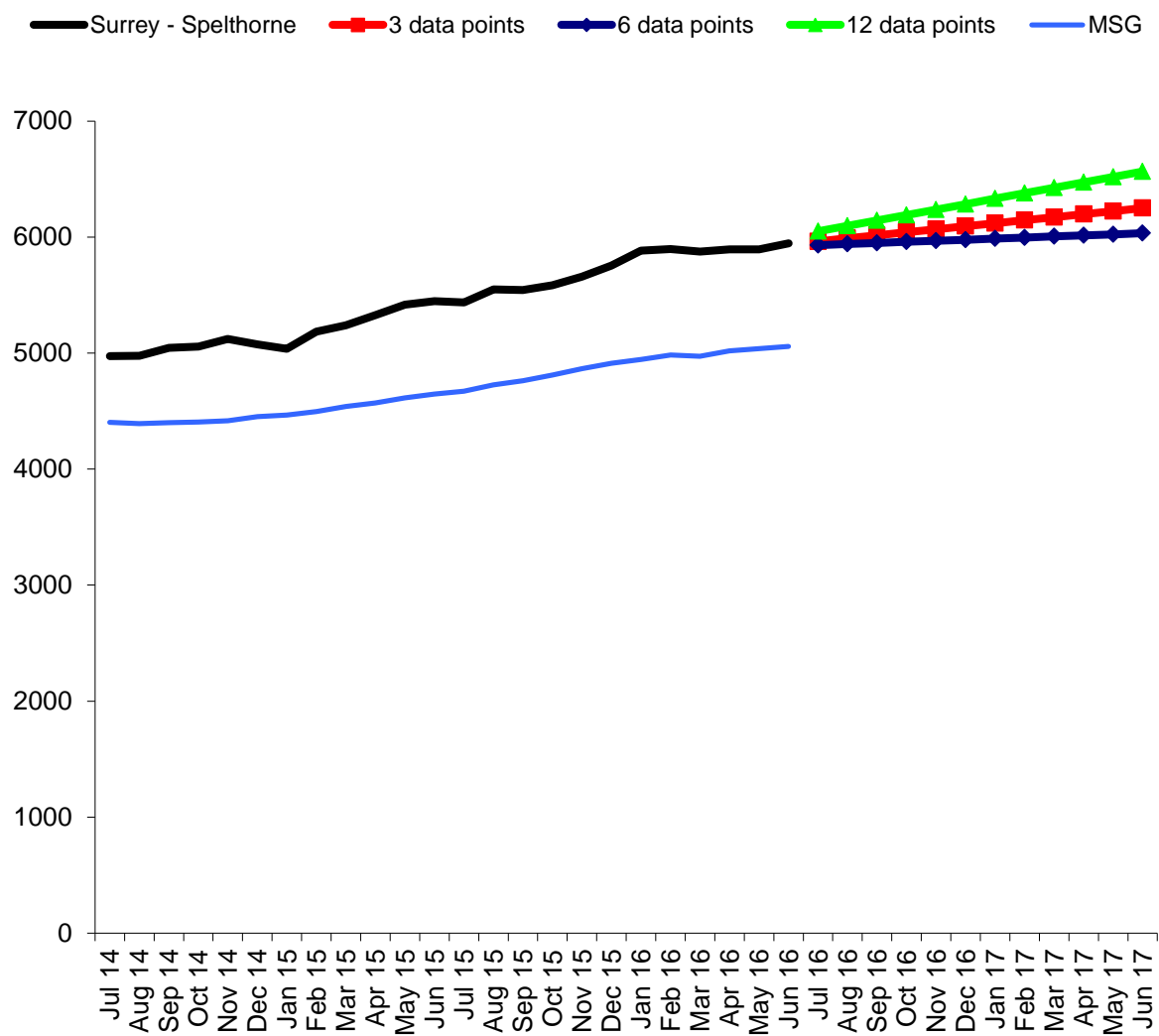
**OFFICIAL SENSITIVE - Provisional data before it is finalised and published by the Office for National Statistics**





Projection all crime

**iQuanta Projection Chart - Rolling 12 Month Crimes  
Surrey - Spelthorne  
Crimes  
01 Jul 2014 - 30 Jun 2016**



**OFFICIAL SENSITIVE - Provisional data before it is finalised and published by the Office for National Statistics**

Anti-social behaviour

**ASB Incidents Recorded In Period 01-Apr-2016 to 31-Jul-2016 Inclusive**

Category Code	Category Description	TOTAL
ASB01	ABND VEH NOT STOLEN OR CAUSING OBSTRUCTN	46
ASB02	ANIMAL PROBLEMS	7
ASB05	FIREWORKS - INAPP SALE /USE /POSSESSION	4
ASB06	MALICIOUS / NUISANCE COMMUNICATIONS	30
ASB07	NOISE	46
ASB09	LITTERING/DRUGS PARAPHERNALIA	16
ASB10	NUISANCE NEIGHBOURS	62
ASBXX	ROWDY OR INCONSIDERATE BEHAVIOUR - TOTAL	414
ASB11	ROWDY OR INCONSIDERATE BEHAVIOUR NUISANCE	334
ASB16	ROWDY OR INCONSIDERATE BEHAVIOUR PERSONAL	80
ASB12	STREET DRINKING	6
ASB14	TRESPASS	20
ASB15	VEHICLE NUISANCE / INAPPROPRIATE USE	202
	<b>TOTAL</b>	<b>853</b>

**Change in recorded incidents year-to-date between 2016-2017 and 2015-2016**

Category Code	Category Description	TOTAL
ASB01	ABND VEH NOT STOLEN OR CAUSING OBSTRUCTN	-21
ASB02	ANIMAL PROBLEMS	-31
ASB05	FIREWORKS - INAPP SALE /USE /POSSESSION	3
ASB06	MALICIOUS / NUISANCE COMMUNICATIONS	-57
ASB07	NOISE	-49
ASB09	LITTERING/DRUGS PARAPHERNALIA	-9
ASB10	NUISANCE NEIGHBOURS	-23
ASBXX	ROWDY OR INCONSIDERATE BEHAVIOUR - TOTAL	-210
ASB11	ROWDY OR INCONSIDERATE BEHAVIOUR NUISANCE	
ASB16	ROWDY OR INCONSIDERATE BEHAVIOUR PERSONAL	
ASB12	STREET DRINKING	-3
ASB14	TRESPASS	9
ASB15	VEHICLE NUISANCE / INAPPROPRIATE USE	-60
	<b>TOTAL</b>	<b>-451</b>